

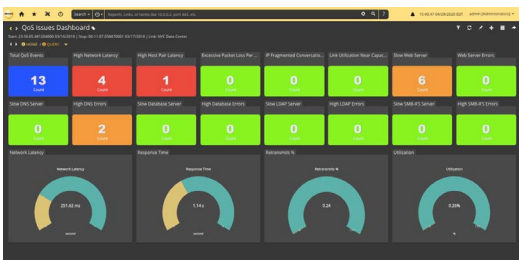


NetVCR®

Proactive Network, Service, and Application Monitoring

Features & Benefits

- » *Traffic capture and multi-time-scale analysis for traffic rates beyond 100 Gbps*
- » *Real-time alerts of various QoS metrics replacing manual troubleshooting processes with proactive discovery, classification, and analysis of diverse applications and protocols*
- » *Rich Executive dashboards and comprehensive reports for automated and optimized workflows using NIKSUN NetXperts*
- » *Monitor QoS and SLAs in real-time*
- » *Visibility into network for capacity planning, trending, accounting, and usage*
- » *Awarded Common Criteria Certification by the National Information Assurance Partnership (NIAP) which is operated by the National Security Agency*
- » *Ad-hoc and scheduled reporting on multiple timescales (subseconds to months) for both real-time operations and strategic decision making*
- » *Plug-and-play device with intuitive web-based interface*
- » *Drill down to packet-level information for granular deep-packet analysis*
- » *Role-based access control*



NIKSUN NetVCR is the world's first full-function appliance for advanced real-time network, service and application performance monitoring that provides zero-loss packet capture not impacted by other processes. NetVCR intelligently integrates vital management functions into a single scalable platform to facilitate:

- » Executive dashboards and comprehensive reports
- » Proactive end-to-end SLA/QoS monitoring and surveillance
- » Continuous, interactive analysis from link to application
- » Multi-timescale analysis (sub-milliseconds to months)
- » Real-time and historical expert analysis
- » Multi-timescale ad-hoc and scheduled reporting (sub-milliseconds to months)

Network and Application Performance Monitoring

Providing 100% visibility into infrastructure in multiple timeframes (from sub-milliseconds to months), NIKSUN NetVCR recognizes a multitude of protocols and applications for proactive discovery, classification, correlation, and real-time analysis with just a few mouse clicks!

NIKSUN NetVCR provides a wide array of benefits including:

- » Proactive alerting from link to application
- » Point-and-click diagnostics and troubleshooting
- » QoS management and reporting
- » Capacity planning/trending
- » Accounting/usage
- » Application/services monitoring (including e-commerce, email, VoIP, multicast, FIX, custom applications, etc.)
- » Performance analysis (loss, delay, latency, jitter, service/application response, throughput, etc.)
- » Seamless integration with other management systems

NIKSUN NetVCR's consolidation of critical infrastructure and application monitoring and analysis capabilities makes it a highly valuable solution that immediately replaces multiple monitoring/troubleshooting devices and empowers enterprises with the key advantages of automation, triage, and cost-efficient instrumentation.

Proactive End-to-End SLM and QoS Monitoring

NIKSUN NetVCR continuously monitors both inbound and outbound traffic, applications and services at real-time production traffic rates, and simultaneously captures, timestamps, and indexes full packets in the NIKSUN Network Knowledge Warehouse (NKW) for zero loss monitoring of enterprise, carrier and ISP networks and services while also generating intelligence for insightful analytics. All traffic is analyzed in real-time at line speeds and alerts

immediately inform users of service interruptions or infrastructure/application degradation as soon as they occur. Each alert is linked to contextual analysis and corresponding packet information, giving users the option to immediately hone in to the sub-millisecond level for troubleshooting and root-cause discovery.

Continuous, Interactive In-depth Analysis from Link to Application

Thanks to the embedded NIKSUN Network Knowledge Warehouse, NIKSUN NetVCR is an analyzer that never forgets. Users have access to a large repository of actual traffic data from sub-second levels to hours and days or even months. This allows users to “rewind” back in time to a problem event for troubleshooting and diagnosis.

With shared workspace and web-based link-to-application layer analysis, NIKSUN NetVCR allows users to collaborate across the globe to troubleshoot and diagnose past or current problems, seamlessly.

Multi-timescale Analysis Across All OSI Layers

NIKSUN NetVCR supports multi-timescale analysis (from sub-millisecond levels to minutes, hours, days, or even months) and multi-level drill-down (Link to Application layer), enabling users to start at a high-level view and pivot to an application and/or hosts for detection and analysis of short-lived events, that are undetectable when data is aggregated by the minute, for reduced mean-time-to-resolution (MTTR).

Bounce diagram analysis visualizing each stage of an application session facilitates even faster diagnostics.

Real-time and Historical Expert Analysis and Performance Alarming

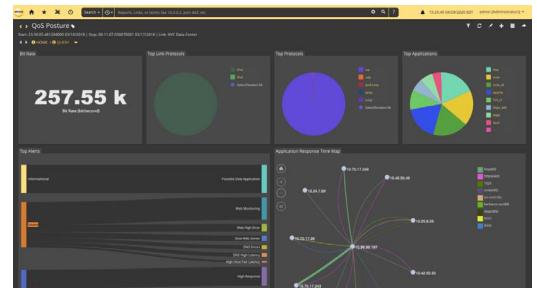
Optional capabilities available via add-on NetXperts and NetSLM modules, further reduce MTTR by providing both real-time and historical advanced analysis and alarming from Link to Application layer.

Multi-timescale Ad-hoc and Scheduled Reporting

NIKSUN NetVCR provides highly customizable reports generated on-demand or on a predefined schedule to suit the needs of both senior management and supporting staff.

Quick, real-time operational reports spanning extremely flexible time frames of sub-milliseconds to minutes or hours or days maximizes operational efficiency, while long-term reports spanning months or even years of network history assist in strategic decision making, planning, trending, optimization, and change control.

With NIKSUN NetVCR’s unlimited storage options, it is possible to archive network information for extremely long periods of time.



Technical Information

- » *Network Interfaces Supported (Full-duplex, Half-duplex) - 1GigE (copper/fiber), 10GigE (fiber) or 20/40/60/80/100GigE (fiber)*
- » *Protocols Supported - TCP, UDP, SCTP, IPv4, IPv6, fragmented IP, IEEE 802.3 (Ethernet), Ethernet MPLS, VLAN (ISL, IEEE 802.1q and stacked 802.1q), DNS, ISO8583, GTP, SIP, CDMA2000, RADIUS, Diameter and others as well.*
- » *Form Factors - A variety of 1U, 2U and 4U+ form factors are available. Internal storage scales to tens of terabytes. Unlimited external storage options are available.*
- » *Integration - Authentication - TACACS+, RADIUS, LDAP, Active Directory, and CAC. All NIKSUN products integrate with NIKSUN NetOmni™ Full Suite for enterprise-wide data aggregation, reporting, and visualization.*

Interested in learning more?

For more information, please visit us online at niksun.com.



457 North Harrison St. • Princeton • NJ 08540 • USA
t: +1.609.936.9999 • toll free: +1.888.504.3336
f: +1.609.419.4260
info@niksun.com • www.niksun.com

NIKSUN, NetDetector, NetVCR, NetOmni, Supreme Eagle and other NIKSUN marks are either registered trademarks or trademarks of NIKSUN, Inc. in the United States and/or other countries. Other product and company names mentioned herein may be the trademarks of their respective owners. For more information, including a complete list of NIKSUN marks, visit NIKSUN’s website at www.niksun.com. Copyright© 2025 NIKSUN, Inc. All rights reserved. NK-DS-NetVCR-0125-1.0