



# FlowAggregator™ & NetPoller™

Scalable flow and infrastructure monitoring

## Features & Benefits

- » *FlowAggregator® for real-time network and application performance and operational insights via advanced flow collection and visual analytics*
- » *Application Visibility and Control (AVC) including NBAR, ART metrics, Media Performance Metrics and Firewall Flows*
- » *NetPoller® for monitoring availability, health, QoS, and performance of devices in the network*
- » *Proactive alerting on various network and QoS issues*
- » *Network wide port by port bandwidth, errors, discards, and QoS policy monitoring for finer troubleshooting*
- » *Wired and Wireless monitoring*
- » *Rich dashboards and user-friendly reports for precise root cause analysis with minimal MTTR*
- » *Full visibility into every router, switch, end points, and ports*
- » *Seamless correlation with existing NIKSUN solutions for deeper analysis*
- » *Flexible real time, historic and scheduled reporting for both real-time operations and strategic decision making*
- » *Plug-and-play device with minimal training and absolutely no network downtime*

## FlowAggregator

NIKSUN® FlowAggregator® is an advanced flow data collector that incorporates NetFlow and other flow data types into the NIKSUN Network Knowledge Warehouse (NKW) for powerful and reliable performance monitoring, network traffic accounting, usage-based network planning, forensics, and reporting.

FlowAggregator provides insight into how your network bandwidth is being utilized and how the applications and services are performing. By end to end tracking of IP conversations and seamless correlation with NetPoller® it provides precise root cause analysis which pinpoints up to the router and port level:

- » Advanced Application Recognition using NBAR2 applications collected via AVC (Application Visibility and Control) flows.
- » Ability to classify more than 1400 applications and provide application usage statistics and performance metrics.
- » ART metrics like response time, network time for TCP applications and jitter, packet loss, and latency for VoIP applications.
- » In-depth visibility into firewall traffic for insight into bandwidth usage and violations per user.
- » Generates proactive alerts on any of the flow collected metrics for various performance and security concerns.
- » Supports logical grouping of network devices for focused analysis.



## NetPoller

Network infrastructure monitoring plays a vital role in improving business outcomes for today's challenging and complex IT environments where day to day performance and availability become critical factors.

NIKSUN NetPoller® offers complete visibility, availability and health monitoring of your network. It provides real-time intelligence across your entire network by polling distributed network switches, servers, firewalls, and network components via SNMP.

- » Extensive multi-vendor MIB support for routers, switches, ports, and end points.
- » Monitoring of CPU load, memory usage, storage, and hardware health.
- » Inbound/Outbound bandwidth, packets, errors and discards trending with support for high capacity counters.
- » Monitors QoS pre and post policy traffic statistics, packet drops, and policy configurations and IP SLA operations.
- » NBAR application traffic monitoring to effectively prioritize your applications.
- » Seamless integration with Flow Aggregator for deeper analysis of applications and IP conversations.
- » Wireless AP and client monitoring.
- » Device discovery for detecting neighboring devices.

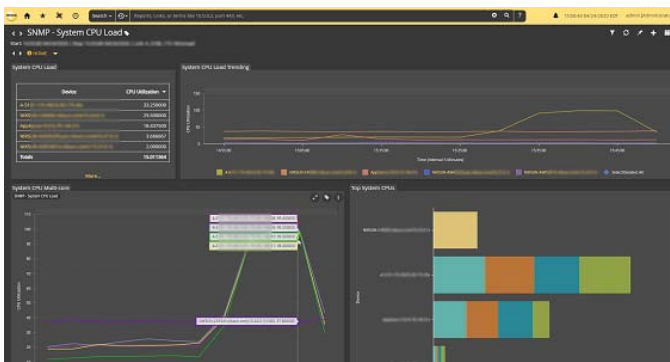
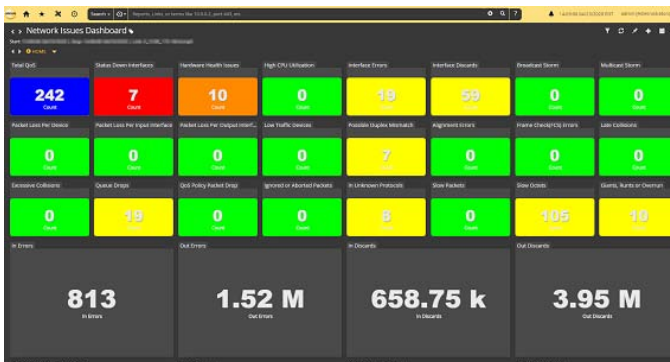
With NIKSUN's advancement into all areas, IT and business users are now equipped to correlate across all their data sources – Packets, Flow, SNMP, Logs, and Events.

## Technical Information

- » *NetFlow Versions Supported: (v5, v7, v9), IPFIX flow format and other flow types such as NetStream*
- » *SNMP Versions Supported - (v1, v2c, v3)*
- » *Form Factors - A variety of 3U and 3U+ form factors are available. Internal storage scales to tens of terabytes. Unlimited external storage options are available.*
- » *Integration - Authentication - TACACS+, RADIUS, LDAP, Active Directory, and CAC. All NIKSUN products integrate with NIKSUN NetOmni™ Full Suite for enterprise-wide data aggregation, reporting, and visualization.*

Interested in learning more?

For more information, please visit us online at [niksun.com](http://niksun.com).



457 North Harrison St. • Princeton • NJ 08540 • USA  
t: +1.609.936.9999 • toll free: +1.888.504.3336  
f: +1.609.419.4260  
info@niksun.com • www.niksun.com

NIKSUN, NetDetector, NetVCR, NetOmni, Supreme Eagle and other NIKSUN marks are either registered trademarks or trademarks of NIKSUN, Inc. in the United States and/or other countries. Other product and company names mentioned herein may be the trademarks of their respective owners. For more information, including a complete list of NIKSUN marks, visit NIKSUN's website at [www.niksun.com](http://www.niksun.com). Copyright© 2025 NIKSUN, Inc. All rights reserved. NK-DS-FL-NP-0125-1.0